



MMS Connector for Adobe Campaign Installation Guide

Table of Contents

- [Prerequisites](#)
- [Configuring the GPG Public Key](#)
- [Importing the Package](#)
- [Configuring the Forms](#)
- [Configuring the Enumerations](#)
- [Configuring the Options](#)

Prerequisites

In your Adobe Campaign Classic instance, in order to install, you must have:

- The ability to install GPG Keys
- Admin access to the Adobe Campaign Classic instance where the connector will be installed
- Admin access for the SFTP server of this instance, or ability to create directories on

In addition, Sinch will need to provide you with the following before starting installation:

- The MMS Connector .XML package (PKG_MMS_CONNECTOR_V1.xml)
- An "actions.xml" file
- A "subforms.xml" file
- Sinch's GPG public key
- The API Key(s) for the connector
- The Company ID(s) connector
- The Data Source ID(s) for the connector

Configuring the GPG Public Key

The “GPG Utility” must be installed on the Adobe instance in order to use Sinch’s public key

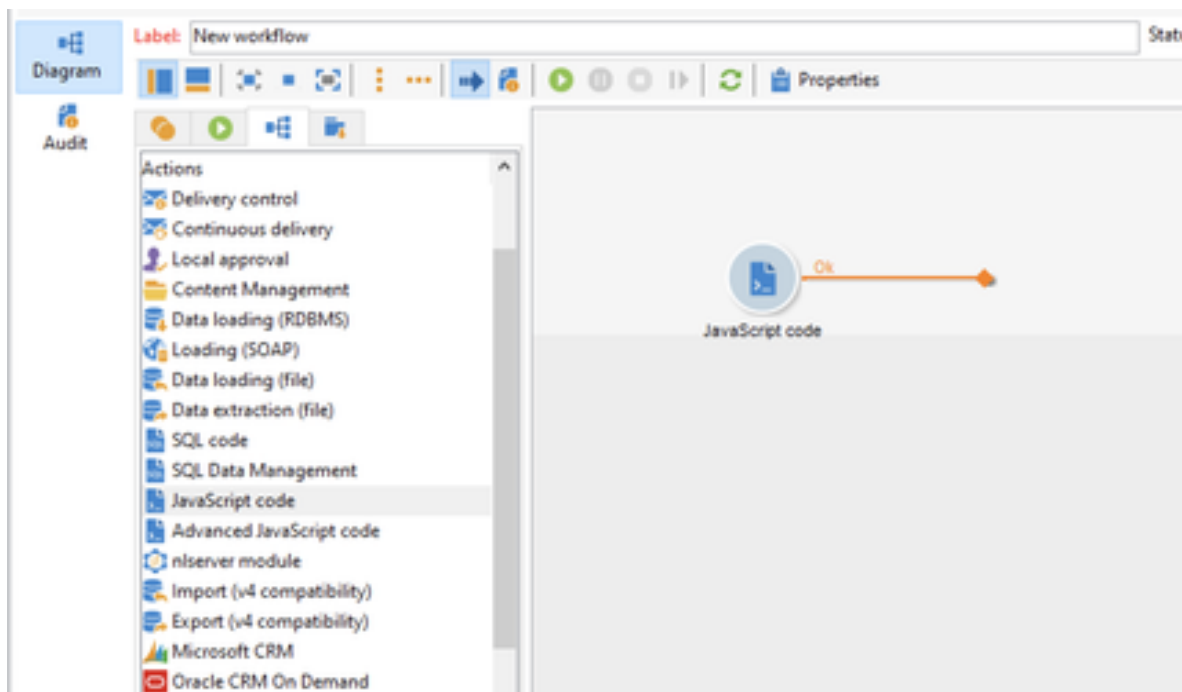
- If your instance is configured to use Control Panel, follow the directions outlined by Adobe here: <https://docs.adobe.com/content/help/en/control-panel/using/instances-settings/gpg-keys-management.html>
- If your instance is not configured to use Control Panel, you must import the public key using a workflow. The directions are below.

If you’re not sure that you have the GPG Utility installed on your instance of Adobe Campaign Classic, request assistance from Adobe Support.

Importing the GPG Key Via A Workflow

Place the public key as a .txt file on the instance server. Note the path in which the file is stored.

In Adobe Campaign, create a workflow and add a "JavaScript Code" box.



In this JavaScript Code box, insert these lines and replace the path (“FULL_PATH/SINCH_GPG_KEY.txt”) with the one where you stored the public key:

```
var cmdImportKey = 'gpg --import "FULL_PATH/SINCH_GPG_KEY.txt"';

try {
  var response = execCommand(cmdImportKey);
  logInfo("cmdImportKey -> response : " + String(response));
} catch(e) {
  logWarning("Error importing the key : " + e);
}
```

Start the workflow.

To validate that the key has been imported, replace the command 'gpg --import "FULL_PATH / SINCH_GPG_KEY.txt"' with 'gpg --list-keys' and restart the workflow.

```
var cmdImportKey = 'gpg --list-keys';

try {
  var response = execCommand(cmdImportKey);
  logInfo("cmdImportKey -> response : " + String(response));
} catch(e) {
  logWarning("Error importing the key : " + e);
}
```

In the workflow log you should find a line that looks like:

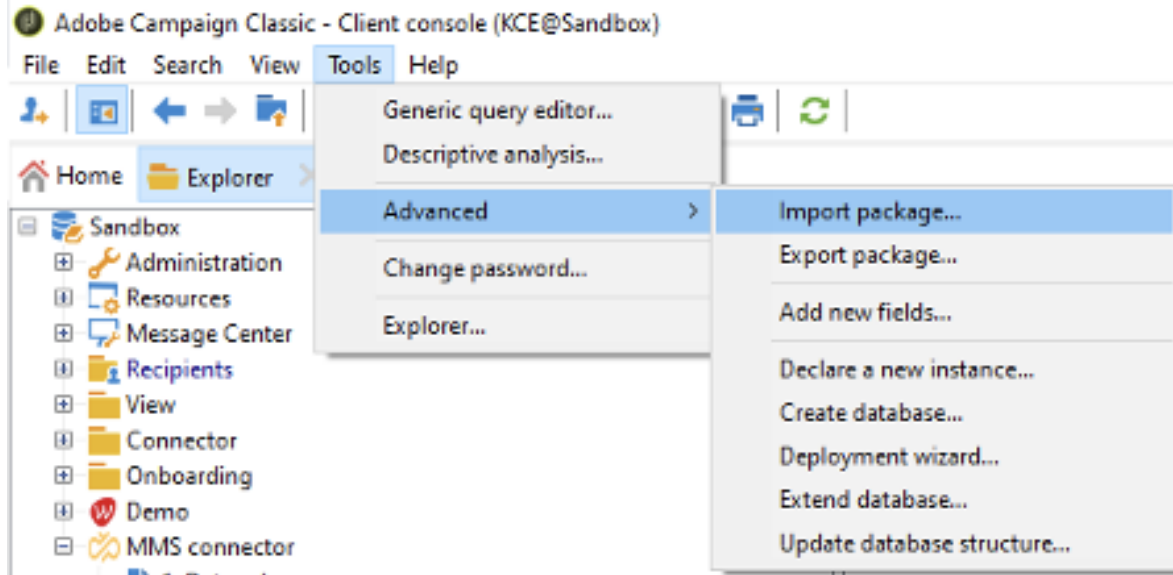
```
Fiddleback <security@vehicleagency.com> sub 4096g ##### 2012-10-05
```

In the red box you will find the **identifier** of your key, which will be kept for later.

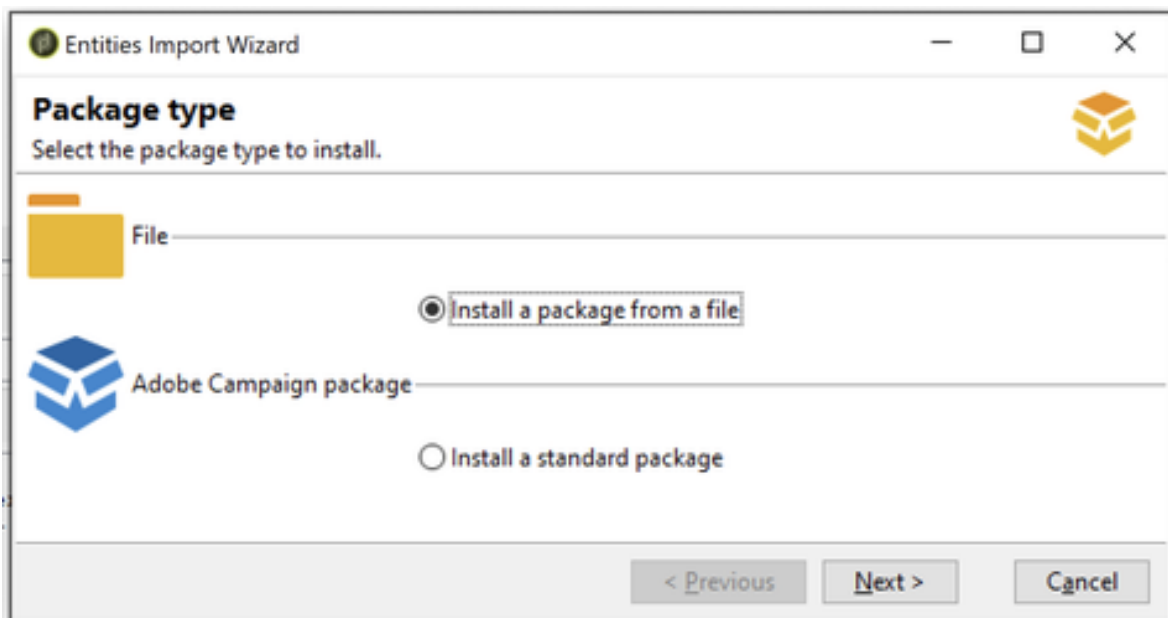
Importing the Package

Login to the Adobe Campaign Classic instance where the connector will be installed.

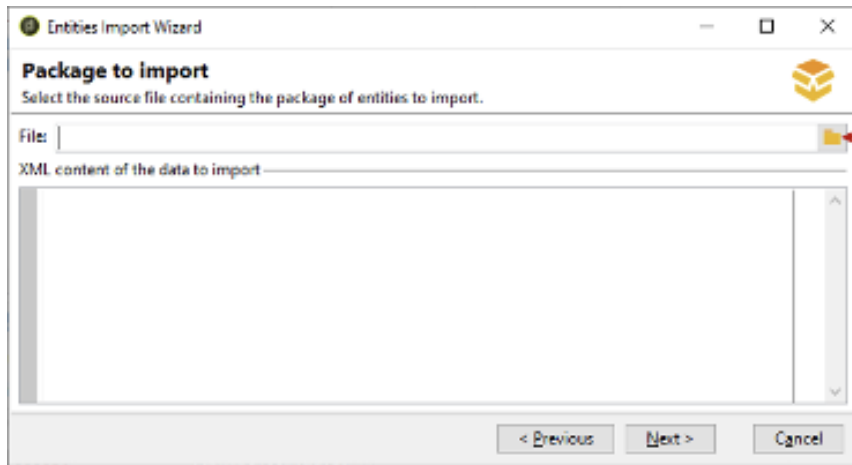
In the top navigation, click “Tools” > “Advanced” > “Import Package”.



Select “Install a package from a file”.

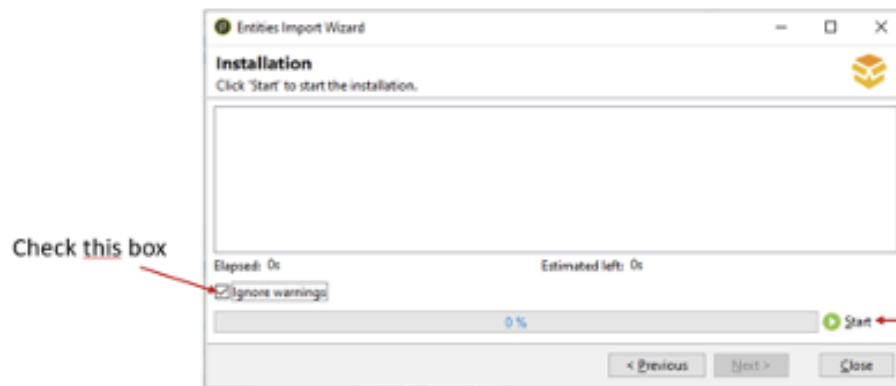


Select your package (PKG_MMS_CONNECTOR_V1.xml) provided by Sinch. Now click on the “Next” button.



Click here to select the package

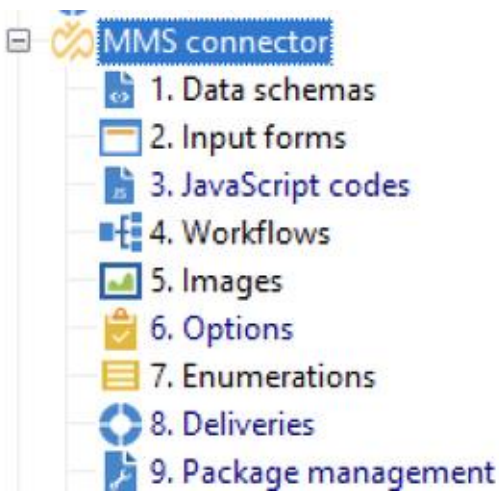
Check the "Ignore warnings" box to ignore any version conflict. Then click on the "Start" button.



Check this box

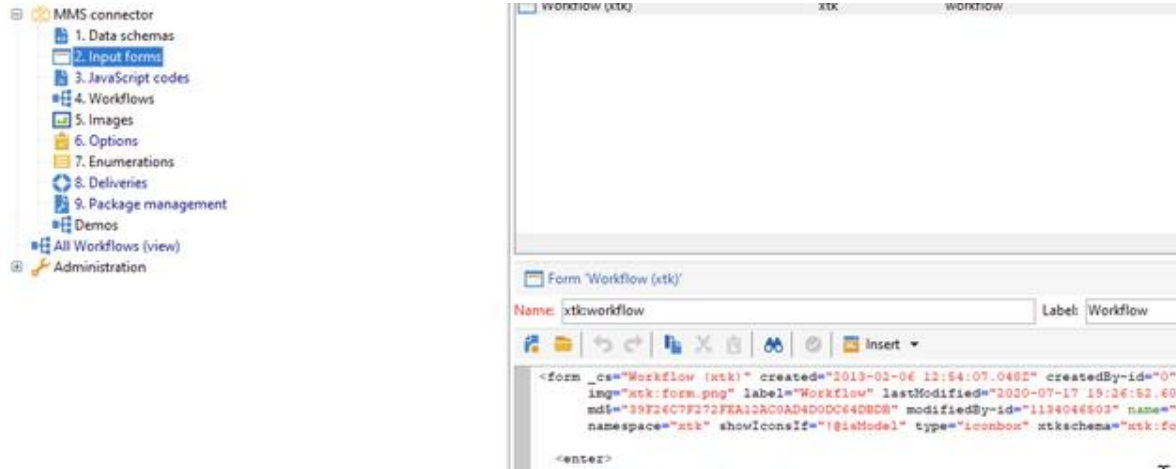
Now you can start the import

Once Completed, you will see the "MMS Connector" folder created in the Explorer.



Configuring the Forms

You will now have to modify the “xtk:workflow” form located in the “2. Input forms” folder of the MMS Connector. This provides the interactivity when you use the connector.



WARNING: The following changes to “xtk:workflow” must be added manually to ensure any past changes are not overwritten.

To modify the form:

Open this form and locate the **Actions** container element. It will look like this:

```
<container img="xtk:workflow16x16.png" label="Actions" name="tools">
```

Directly beneath the **Actions** container element, copy and paste the contents of the “Action.xml” file provided to you.

Locate the **subforms** container element. It will look like this:

```
<container name="subforms" xpath=".">
```

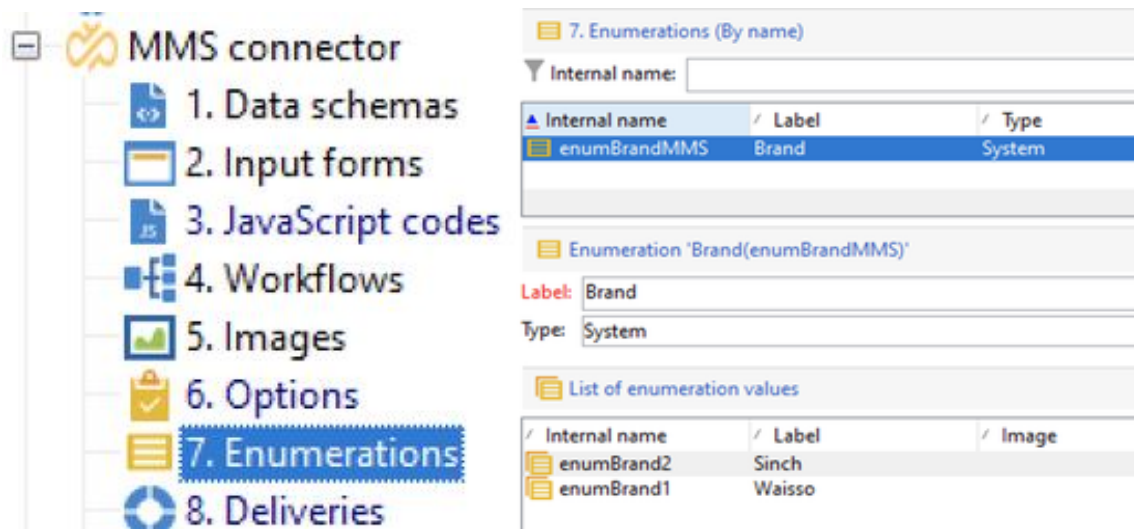
Directly beneath the **subforms** container element, copy and paste the contents of the “subforms.xml” file provided to you.

Save your changes.

Configuring the Enumerations

The “Enumerations” area of the connector is where you will configure how many “Brands” will use the connector. For most people, this will be only a single brand, but some may want to maintain separate properties to each “Brand”.

From the MMS connector, Go to “7. Enumerations” and click on “enumBrandMMS” to open the settings.



The screenshot shows the MMS connector configuration interface. On the left, a sidebar lists eight categories: 1. Data schemas, 2. Input forms, 3. JavaScript codes, 4. Workflows, 5. Images, 6. Options, 7. Enumerations (highlighted), and 8. Deliveries. The main panel displays the configuration for '7. Enumerations (By name)'. It includes an 'Internal name' field, a table with columns 'Internal name', 'Label', and 'Type', and a section for 'Enumeration "Brand(enumBrandMMS)"' with 'Label' and 'Type' fields. Below that is a 'List of enumeration values' table with columns 'Internal name', 'Label', and 'Image'.

Internal name	Label	Type
enumBrandMMS	Brand	System

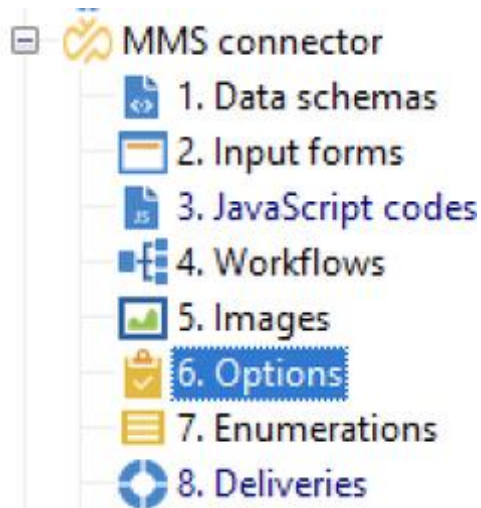
Internal name	Label	Image
enumBrand2	Sinch	
enumBrand1	Waisso	

Under “enumBrandMMS”, click “Add” for each brand that you want to use in your connector.

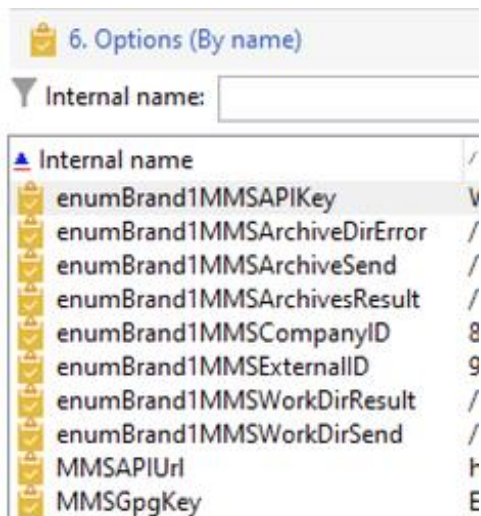
- Each internal name should be: enumBrandX, with “X” denoting the brand number.
- Also, enter the brand’s name via the “Label”. This will allow you to identify which brand is being used in the Connector

Configuring the Options

For each brand, several options must be filled in to configure the component. To do so, go to the MMS connector and click on “6. Options”.



You will see a list of items such as this:



Folders will need to be created on your Adobe Campaign instance in order to store files that are being imported and exported from Adobe Campaign.

- **enumBrand1MMSWorkDirSend**
 - fill in the folder path where the files sent to Sinch will be stored.
- **enumBrand1MMSArchiveSend**
 - fill in the folder path where the files that have been already sent to Sinch will be stored.
- **enumBrand1MMSWorkDirResult**
 - fill in the folder path where the files retrieved from Sinch will be stored, to be processed later
- **enumBrand1MMSArchivesResult**
 - fill in the folder path where the files that were retrieved from Sinch and already processed will be stored
- **enumBrand1MMSArchiveDirError**
 - fill in the folder where the files with error are be stored.

In addition, various IDs and keys will need to be set as well:

- **enumBrand1MMSAPIKey**
 - fill in the API Key provided by Sinch.
- **enumBrand1MMSExternalID**
 - fill in the data_source_external_id provided by Sinch.
- **enumBrand1MMSCompanyID**
 - fill in the company ID provided by Sinch.
- **MMSAPIUrl**
 - fill in the API URL provided by Sinch
- **MMSGpgKey**
 - enter the **identifier** of the previously imported GPG key.

In this example, there is only one “Brand”, but if there are other “Brands” you must add new “Options” for each brand. If there is another “Brand”, you must add:

- **enumBrand2MMSWorkDirSend**
- **enumBrand2MMSArchiveSend**
- **enumBrand2MMSWorkDirResult**
- **enumBrand2MMSArchivesResult**
- **enumBrand2MMSArchiveDirError**
- **enumBrand2MMSAPIKey**
- **enumBrand2MMSExternalID**
- **enumBrand2MMSCompanyID**

For any additional “Brands”, repeat these steps and increment the brand number for each additional brand configured in “7. Enumerations”.